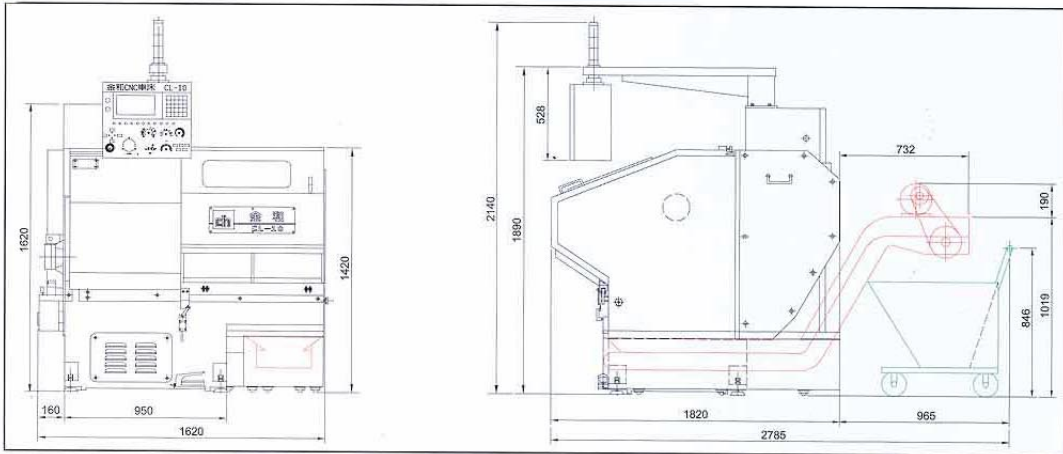


CL-10



► Dimensional Drawing



Item		CL-10	CL-12
Capacity	Standard turning diameter	320mm	
	Standard cutting length	150mm	
	Standard cutting length	100mm	
Stroke	X-axis	480mm	
	Z-axis	250mm	
Spindle	Speed	80-4000rpm	60-3000rpm
	Spindle nose	A2-5	A2-6
	Spindle bearing ID	90mm	100mm
	Spindle bore	50mm	75mm
	Bar Capacity	42mm	65mm
Toolholder	Type	Gang bed fixed on cross slide	
	OD tool shank	□20mm	
	ID tool shank(Max.)	ø25mm	
Feed traverse	X - axis	10m/min	
	Z - axis	8m/min	
Motor	Main motor(30min.)	10HP \ 7.5kw	
	Servo motor	X:1.2HP \ 0.9kw Z:1.3HP \ 1.0kw	
	Hydraulic unit motor	1HP \ 0.75kw	
	Coolant pump motor	1/4HP \ 0.18kw	
Machine dimension	Height	1900mm	
	Floor space	1750x1900mm	
	Weight	2100 kgs	2200 kgs

Standard equipment & accessorier

- FANUC 0TD controller
- Main motor 10HP
- Hydraulic system
- 6" hollow 3-jaw hydraulic chuck for CL-10
- Hard jaws & soft jaw 1 SET/EACH for CL-10
- AD-65 collet chuck for CL-12
- Coolant tank & coolant system
- Moving door & splash guard
- Work light
- Single tool holder 4 PCS
- Double tool holder 1 PC
- Drill holder 1 PC
- Boring bar socket 1 SET
- Drill socket 1 SET

Optional equipment & accessories

- Subplate
- Single, double tool holder for subplate
- Drill holder for subplate
- Chip conveyor & chip bucket
- Transformer
- Spindle mechanical orientantion, 15°, 24 position
- Drill attachment
- Graphic display
- Manual-loading automatic feeder system
- Milling angle attachment
- Material puller